

Thank you for being a loyal customer!

You are now a proud owner of a reliable vending product from a reliable company! We are proud to provide great customer service and loyal support to all of our customers. Our goal is to make sure you have a smooth operation. Do you have questions about the product? Do you have something to suggest that we can improve on? Entervending's team operates to solve any problems or concerns 7 days a week.

Entervending LLC
2160 Premier Row Orlando, Florida 32809
Tel: 954 769-0510 Fax: 954 616-5658
www.entervending.com



If you are interested in converting your machine to a Free Spin, please refer to this QR code to watch a short video.

ENTERVENDING CAPSULE MACHINE

MANUAL

9. Warranty

All plastic and metal parts have a 1-year warranty.

All moving parts of the coin mechanisms have a 3-month warranty.

The warranty does NOT cover:

1. Natural wear and tear
2. Transportation damage
3. Natural disasters or weather damage
4. Loss of income
5. Loss of products inside the globes
6. Being used in inappropriate ways
7. Using other manufacturer parts in the unit, including locks and keys

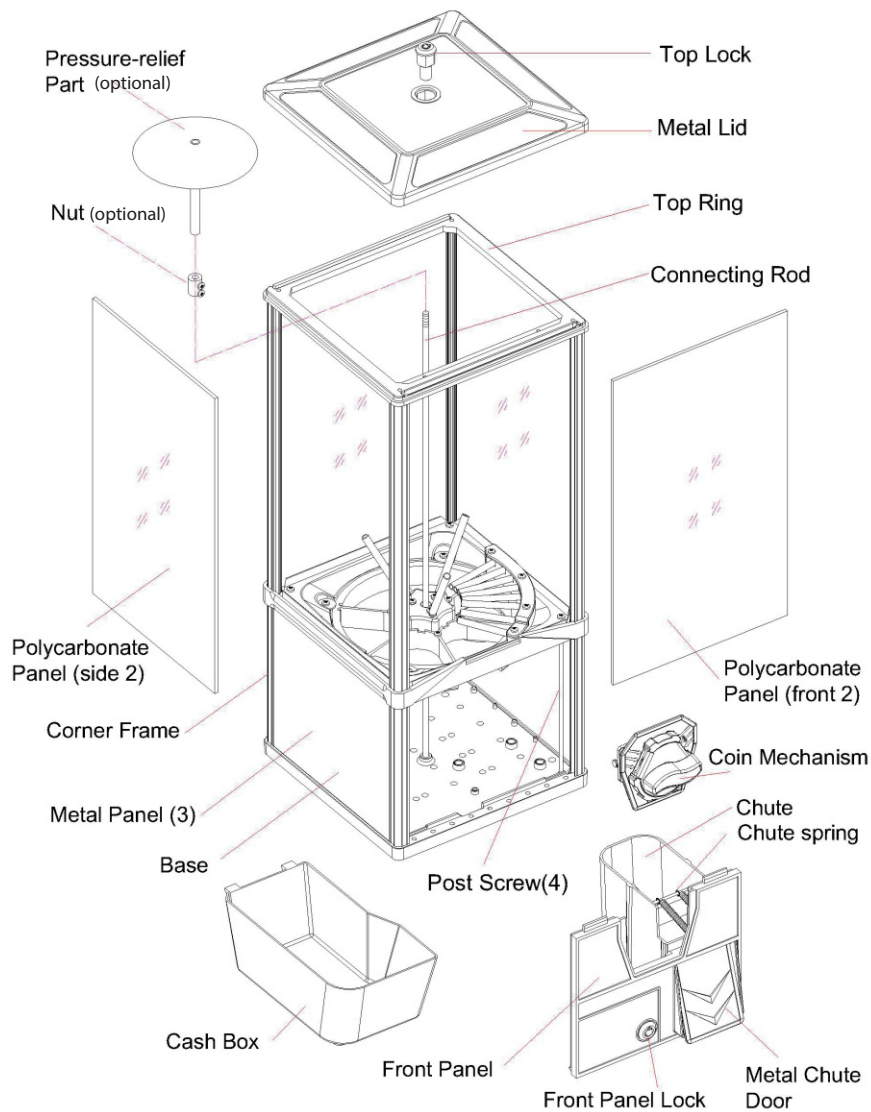


Figure 1

7. Servicing and Cleaning

Make sure that the capsule vending machine is in the great working condition by regularly servicing and cleaning the unit.

Remove dust off the globe to keep an attractive appearance.

We also recommend washing a globe with a soap once a month.

Disassemble coin mechanism to clean and oil moving parts with a grease every 3 month to prolong the life and decrease the wear.

8. Safety

Make sure that the capsule vending machine is placed in a secure area to avoid any tipping or falling over.

While servicing the machine, make sure all parts are assembled correctly & tightened to ensure proper work.

If you plan on putting the vending machine on a carpet, we advise you to use a stand with a wider base to avoid tipping or falling over.

If you notice the globe has any cracks, replace it immediately.

If you notice rust on the inner metal parts inside the globe, replace them immediately to avoid spoiling food.

Replace any broken or dirty parts within the unit as they could potentially harm your consumer health.

Contents

1. Product Description
2. Initial Set-up
3. Coin Mechanism
4. How to Make a Purchase
5. Heavy-Duty Cast Iron Stand
6. Collecting Coins
7. Servicing and Cleaning
8. Safety
9. Warranty

1. Product Description

Capsule Vending Machine has many great features, such as all-metal coin mechanisms, shatterproof polycarbonate high-quality plastic globe and a coin box behind separate lock.

This vending machine is capable of vending 2-inch capsules, 45 - 49 mm bouncy balls and 2-inch gumballs.
Maximum capacity is 195 pcs.

Machine dimensions:

Height: 25 inches / 63.5 cm

Width: 11 inches / 28 cm

Length: 10 inches / 25.4 cm

Weight: 18.6 lb / 8.44 kg

2. Initial Set-up

1. Converting the wheel dispensers:

- a. Unlock / Open lid by removing lock in an unscrewing motion.
- b. Remove the polycarbonate Panel (Front 2) and Pressure-relief Part by removing post screw (4) from the machine (Fig. 1)
- c. Remove 6 x Adjuster Screws from the gumball-dispense wheel.
- d. You are able to convert to 4 different sizes: 30mm, 40mm, 50mm & 60mm. The gumball wheel first needs to have the Riser installed (Fig. 2). The opening of the gum-wheel needs to be facing the front of the machine in order to dispense correctly. Install the gum-wheel so that holes are positioned with the opening to the hopper. Once completed, install the adjuster block and adjust the block to accommodate to the opening size requested. Next, tighten the 6 x Adjustment screws. Upon completing, install the gumball brush spring, adjuster block & brush plate by tightening 4 x screws. Vending 30mm-40mm, adjust the adjuster block to be placed on top of the brush spring (Fig. 3).

Once your desired portion/vend size is completed, fill your machine with product. Place your lid back on & tighten your lock. **NOTE: DO NOT OVERTIGHTEN THE LOCK AS ONLY A SNUG FIT IS NECESSARY.**

6. Collecting Coins

1. Open the front panel lock with included key.
2. Remove the front panel.
3. Take the coin box and collect coins.
4. Put the coin box back and install the front panel lock.
5. Close the front panel lock with the key.

NOTE: DO NOT OVERTIGHTEN THE LOCK AS ONLY A SNUG FIT IS NECESSARY

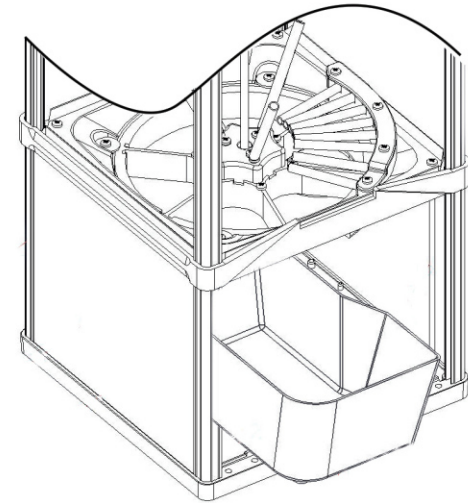


Figure 7

5. Heavy-Duty Cast Iron Stand

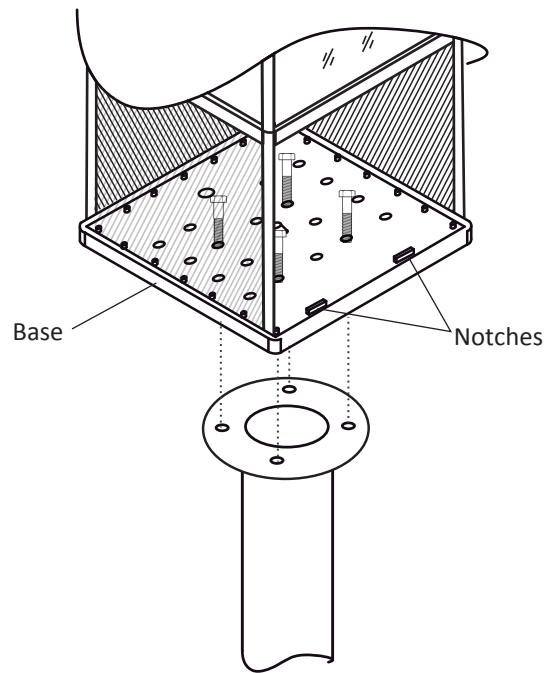


Figure 6

The heavy-duty iron stand itself consists of 3 main parts: base, threaded pipe and threaded flange.

Installing the capsule vending machine on a stand.

- 1) Place the threaded pipe onto the opening of the base and screw it in.
- 2) Place the flange onto the threaded pipe flat side up.
- 3) Secure the base and tighten the flange up by turning clockwise.
- 4) Remove the front panel door of the vending machine to get access to its base plate (See: Retrieving coins).
- 5) Align the holes on the machine's base to those ones of the threaded flange according to Fig. 6.
- 6) Put the included in the package screws into the holes and tighten them up.

NOTE: THE FRONT OF BASE HAS A NOTCH FOR THE PRODUCT CHUTE.

- 7) Reassemble the vending machine in the back order.

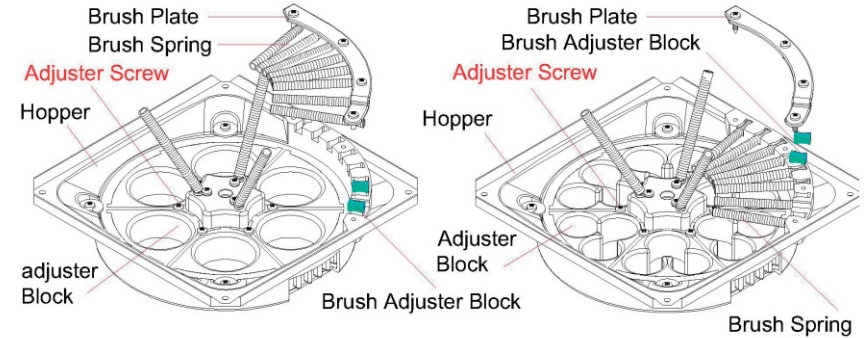


Figure 2

Figure 3

3. Coin Mechanism

The coin mechanism (Fig. 4) can be removed by first opening the Front Panel Lock and removing the Front Panel. (Once lock is loosened, panel is loose; Remove by lifting up and sliding down at a motion).

1. To dismantle coin mechanism:
 - a. Remove center screw.
 - b. Remove sprocket.
 - c. Remove three mounting screws.
 - d. Pull back plate away from face plate.
 - e. Remove jammed coin.
 - f. Replace parts in step A-F in reverse order.

4. How to Make a Purchase

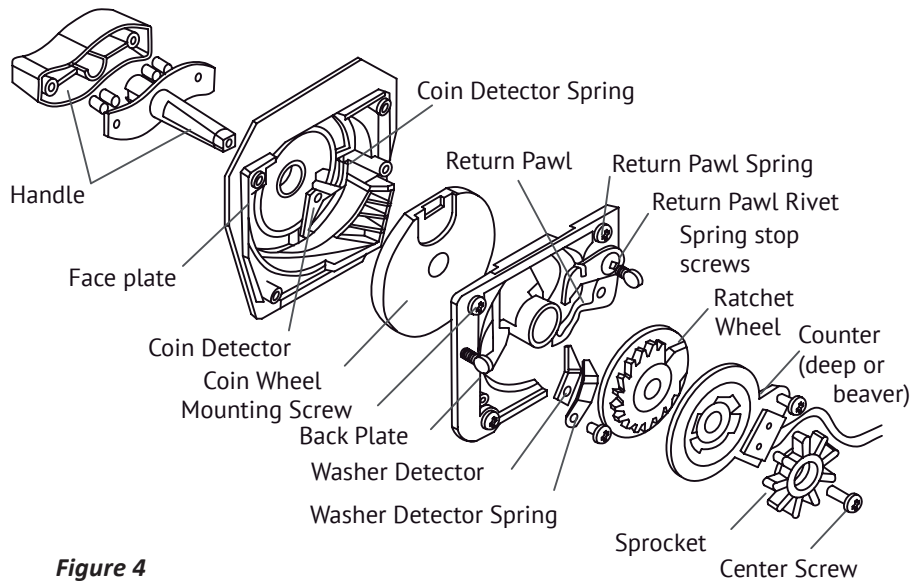


Figure 4

Coin mechanism Exploded illustration view is only for adjusting and maintenance. Extra Coin mechanism parts are sold separately

2. Retrieving coins:

- Remove lock by unscrewing to release front panel door.
- Removing the door will give you access to the coin tray.
- Grab the coin tray from the machine and empty it.
- Repeat points A-C in a reverse order to lock the machine.

NOTE: DO NOT OVERTIGHTEN THE LOCK AS ONLY A SNUG FIT IS NECESSARY.

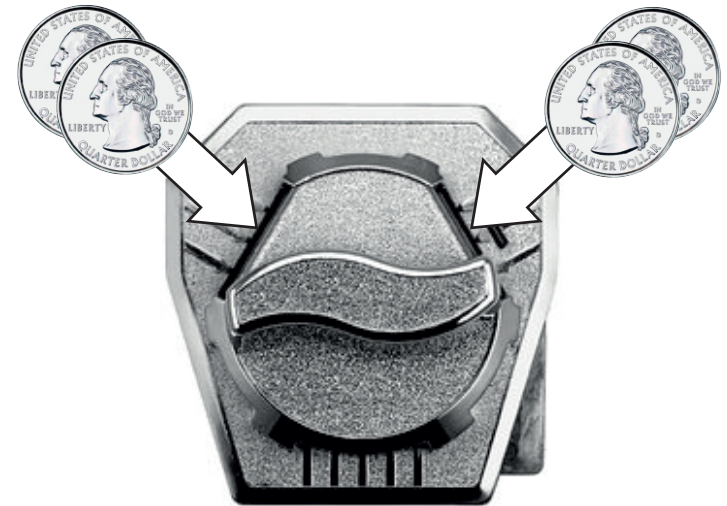


Figure 5

Coin mechanism requires 4 quarter coins for a purchase. It works only if coins are put into slots in the right order.

1. Hold two quarter coins together and put them simultaneously in the first slot.
2. Repeat the first step for the second slot.
3. Turn the knob to make a purchase.